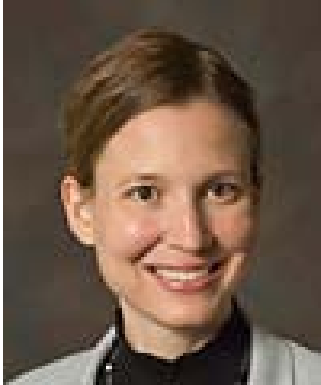


David C. Leach, MD Award Recipients 2011



Claudia Reardon, MD
Psychiatry
University of Wisconsin
Madison, WI

Team Members: Dean Krahn, MD, MS; Eric Heiligenstein, MD; Ken Loving, MD; Douglas Kirk, LCSW; Nicholas Stanek, MD

Nominators had this to say:

“Over the course of the last year, she has worked on an interrelated set of projects meant to help address the ACGME competencies of systems-based practice and practice-based learning and improvement, and meant to foster improved collaboration among various specialties, including Psychiatry, Primary Care, Neurology and Social Work.”

“She has also been centrally involved in the rejuvenation of our local Psychiatry Student Interest Group, which helps identify and mentor possible future psychiatrists. Our Department awarded Dr. Reardon the Resident Award for Academic Excellence in 2009 and 2010, recognizing her contributions to our Department’s scholarly mission. She has also been nationally recognized with the American Psychiatric Association Leadership Fellowship, the American Medical Association Foundation Leadership Award, and the Association of Women Psychiatrists Fellowship.”

“Dr. Reardon has been pivotal in developing our new Quality Improvement (QI) rotation for our senior residents, its associated QI seminar series, and an Educational Retreat for our faculty and residents focusing on QI issues. I truly believe that, with Dr. Reardon’s help, we are forging a new path in residency education. Along with colleagues at the University of California-San Francisco and Henry Ford Health System, we plan on developing a workshop to help other Psychiatry Residencies implement QI curricula. Finally, Dr. Reardon is taking leadership of our re-designed Community Psychiatry rotation and seminar series.”